

500mW Zener Diode Series

ZD5229ASH thru ZD5267ASH

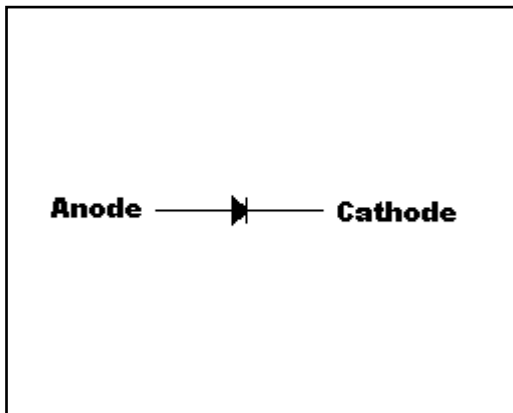
Description

The ZD5229ASH thru ZD5267ASH series covers zener voltage range from 4.3V to 75V, and is encapsulated in SOD-123 package, very suitable for low cost, low power voltage regulation application.

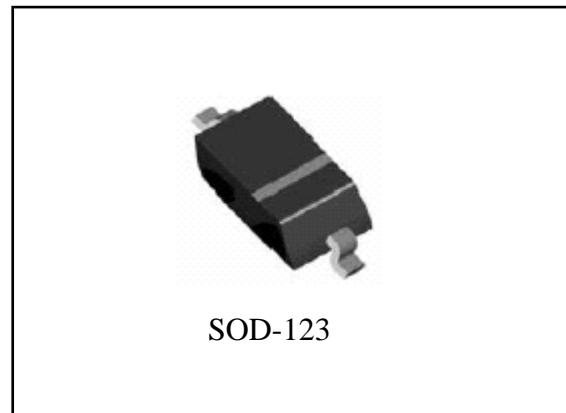
Features

- V_Z tolerance : $\pm 2\%$
- Ultra small surface mount package
- General purpose, medium current
- Planar die construction
- Pb-free lead plating and halogen-free package

Symbol

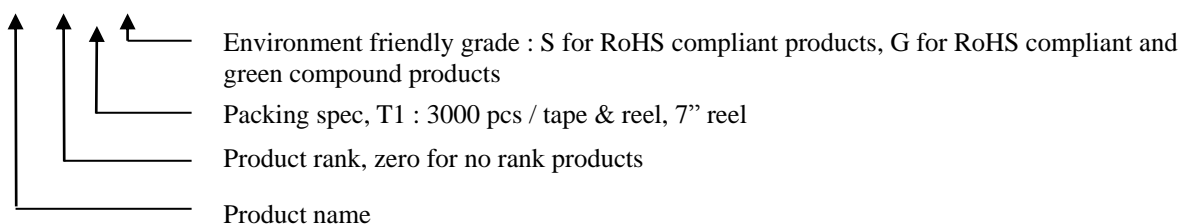


Outline



Ordering Information

| Device | Package | Shipping |
|------------------|--|------------------------|
| ZD52XXASH-0-T1-G | SOD-123 (Pb-free lead plating and halogen-free package) | 3000 pcs / tape & reel |





Absolute Maximum Ratings(Tj=25°C, unless otherwise specified)

- Maximum Temperatures
 Operating and Storage Temperature Range Tj,Tstg -65~+150 °C
- Maximum Forward Voltage @ If=10mA0.9V
- Maximum Power Dissipation
 Total Power Dissipation @TA=25 °C Ptot (Note 1)500 mW
- Thermal Resistance, Junction to Ambient RθJA250°C/W
 Thermal Resistance, Junction to Case RθJC150°C/W
- Maximum Z-current..... Ptot/Vz mA

Note : 1. Parts mounted on FR-5 board with area of 1inch × 1inch.

Electrical Characteristic (Ta=25°C, unless otherwise noted)

| Device | Type Code | Nom. Zener Voltage | | | Max. Zener Impedance | | | | Max. Zener Current | Max. Reverse Leakage Current | |
|---------|-----------|--------------------|-------|-------|----------------------|------|------|------|--------------------|------------------------------|-----|
| | | Vz@IZT (V) | | | ZZT | IZT | ZZK | IZK | IZM@Ta | IR | VR |
| | | Nom. | Min. | Max. | (Ω) | (mA) | (Ω) | (mA) | (mA) | (μA) | (V) |
| ZD5229A | G4 | 4.3 | 4.21 | 4.39 | 22 | 20 | 2000 | 0.25 | 106 | 5.0 | 1.0 |
| ZD5230A | G5 | 4.7 | 4.61 | 4.79 | 19 | 20 | 1900 | 0.25 | 97 | 5.0 | 2.0 |
| ZD5231A | E1 | 5.1 | 5.00 | 5.20 | 17 | 20 | 1600 | 0.25 | 89 | 5.0 | 2.0 |
| ZD5232A | E2 | 5.6 | 5.49 | 5.71 | 11 | 20 | 1600 | 0.25 | 81 | 5.0 | 3.0 |
| ZD5233A | E3 | 6.0 | 5.88 | 6.12 | 7.0 | 20 | 1600 | 0.25 | 76 | 5.0 | 3.5 |
| ZD5234A | E4 | 6.2 | 6.08 | 6.32 | 7.0 | 20 | 1000 | 0.25 | 73 | 5.0 | 4.0 |
| ZD5235A | E5 | 6.8 | 6.66 | 6.94 | 5.0 | 20 | 750 | 0.25 | 67 | 3.0 | 5.0 |
| ZD5236A | F1 | 7.5 | 7.35 | 7.65 | 6.0 | 20 | 500 | 0.25 | 61 | 3.0 | 6.0 |
| ZD5237A | F2 | 8.2 | 8.04 | 8.36 | 8.0 | 20 | 500 | 0.25 | 55 | 3.0 | 6.5 |
| ZD5238A | F3 | 8.7 | 8.53 | 8.87 | 8.0 | 20 | 600 | 0.25 | 55 | 3.0 | 6.5 |
| ZD5239A | F4 | 9.1 | 8.92 | 9.28 | 10 | 20 | 600 | 0.25 | 50 | 3.0 | 7.0 |
| ZD5240A | F5 | 10 | 9.80 | 10.20 | 17 | 20 | 600 | 0.25 | 45 | 3.0 | 8.0 |
| ZD5241A | H1 | 11 | 10.78 | 11.22 | 22 | 20 | 600 | 0.25 | 41 | 2.0 | 8.4 |
| ZD5242A | H2 | 12 | 11.76 | 12.24 | 30 | 20 | 600 | 0.25 | 38 | 1.0 | 9.1 |
| ZD5243A | H3 | 13 | 12.74 | 13.26 | 13 | 9.5 | 600 | 0.25 | 35 | 0.5 | 9.9 |
| ZD5244A | H4 | 14 | 13.72 | 14.28 | 15 | 9 | 600 | 0.25 | 32 | 0.1 | 10 |
| ZD5245A | H5 | 15 | 14.70 | 15.30 | 16 | 8.5 | 600 | 0.25 | 30 | 0.1 | 11 |
| ZD5246A | J1 | 16 | 15.68 | 16.32 | 17 | 7.8 | 600 | 0.25 | 28 | 0.1 | 12 |
| ZD5248A | J3 | 18 | 17.64 | 18.36 | 21 | 7.0 | 600 | 0.25 | 25 | 0.1 | 14 |
| ZD5250A | J5 | 20 | 19.60 | 20.40 | 25 | 6.2 | 600 | 0.25 | 23 | 0.1 | 15 |
| ZD5251A | K1 | 22 | 21.56 | 22.44 | 29 | 5.6 | 600 | 0.25 | 21 | 0.1 | 17 |
| ZD5252A | K2 | 24 | 23.52 | 24.48 | 33 | 5.2 | 600 | 0.25 | 19.1 | 0.1 | 18 |
| ZD5254A | K4 | 27 | 26.46 | 27.54 | 41 | 5.0 | 600 | 0.25 | 16.8 | 0.1 | 21 |
| ZD5255A | K5 | 28 | 27.44 | 28.56 | 44 | 4.5 | 600 | 0.25 | 16.2 | 0.1 | 21 |
| ZD5256A | M1 | 30 | 29.40 | 30.60 | 49 | 4.2 | 600 | 0.25 | 15.1 | 0.1 | 23 |
| ZD5257A | M2 | 33 | 32.34 | 33.66 | 58 | 3.8 | 700 | 0.25 | 13.8 | 0.1 | 25 |
| ZD5258A | M3 | 36 | 35.28 | 36.72 | 70 | 3.4 | 700 | 0.25 | 12.6 | 0.1 | 27 |



| | | | | | | | | | | | |
|---------|----|----|-------|-------|-----|-----|------|------|------|-----|----|
| ZD5259A | M4 | 39 | 38.22 | 39.78 | 80 | 3.2 | 800 | 0.25 | 11.6 | 0.1 | 30 |
| ZD5260A | M5 | 43 | 42.14 | 43.86 | 93 | 3 | 900 | 0.25 | 10.6 | 0.1 | 33 |
| ZD5261A | N1 | 47 | 46.06 | 47.94 | 105 | 2.7 | 1000 | 0.25 | 9.6 | 0.1 | 36 |
| ZD5262A | N2 | 51 | 49.98 | 52.02 | 125 | 2.5 | 1100 | 0.25 | 8.8 | 0.1 | 39 |
| ZD5263A | N3 | 56 | 54.88 | 57.12 | 150 | 2.2 | 1300 | 0.25 | 8.0 | 0.1 | 43 |
| ZD5264A | N4 | 60 | 58.8 | 61.2 | 170 | 2.1 | 1400 | 0.25 | 7.5 | 0.1 | 46 |
| ZD5265A | N5 | 62 | 60.76 | 63.24 | 185 | 2.0 | 1400 | 0.25 | 7.3 | 0.1 | 47 |
| ZD5266A | P1 | 68 | 66.64 | 69.36 | 230 | 1.8 | 1600 | 0.25 | 6.6 | 0.1 | 52 |
| ZD5267A | P2 | 75 | 73.5 | 76.5 | 270 | 1.7 | 1700 | 0.25 | 6.0 | 0.1 | 56 |

Recommended Soldering Footprint



Typical Characteristics

Typical Temperature Coefficient



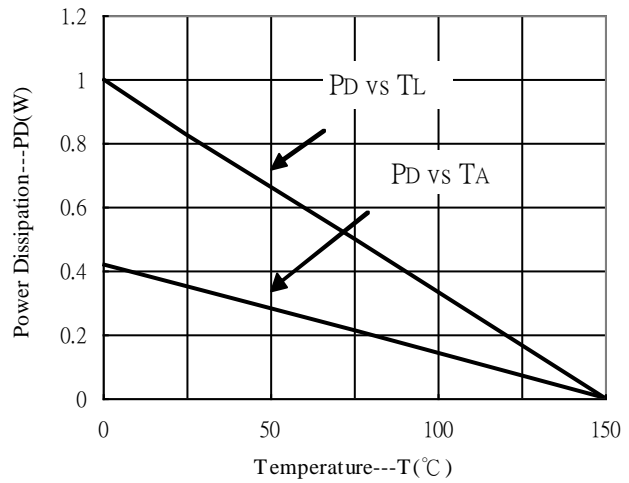
Dynamic Impedance



Typical Capacitance

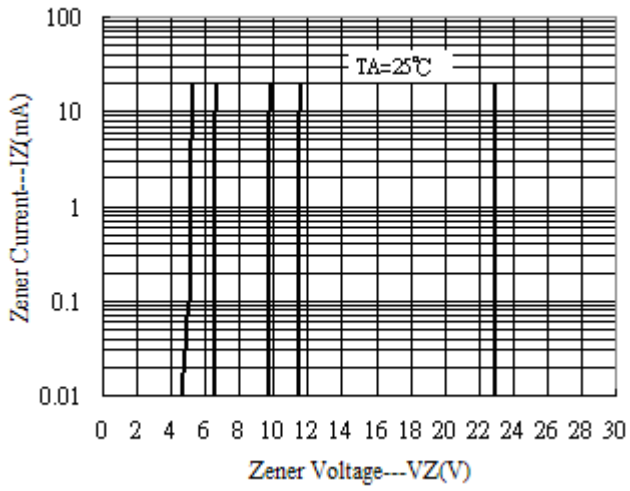


Power Derating Curve

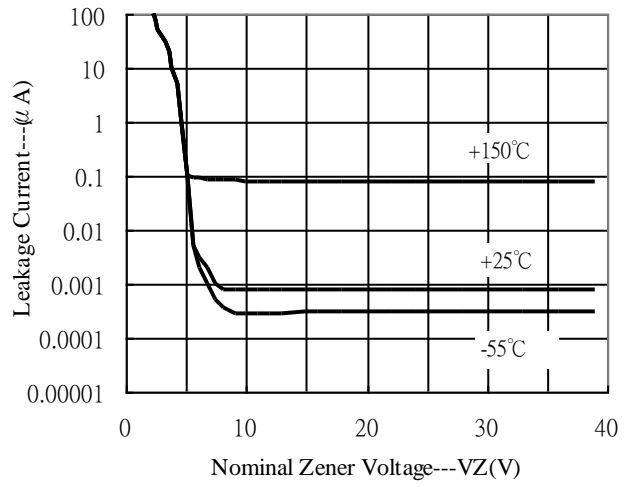




Zener Current vs Zener Voltage



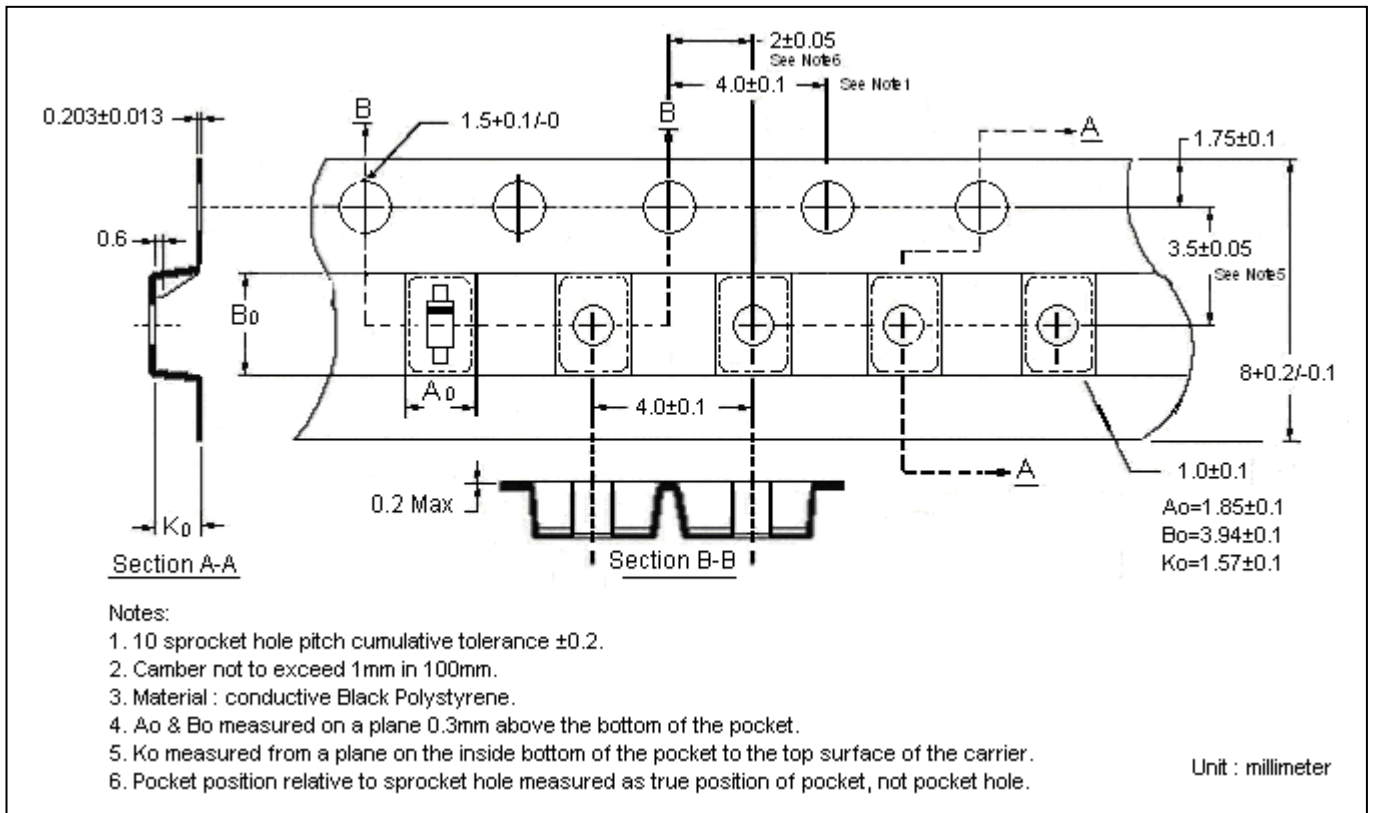
Typical Leakage Current



Reel Dimension



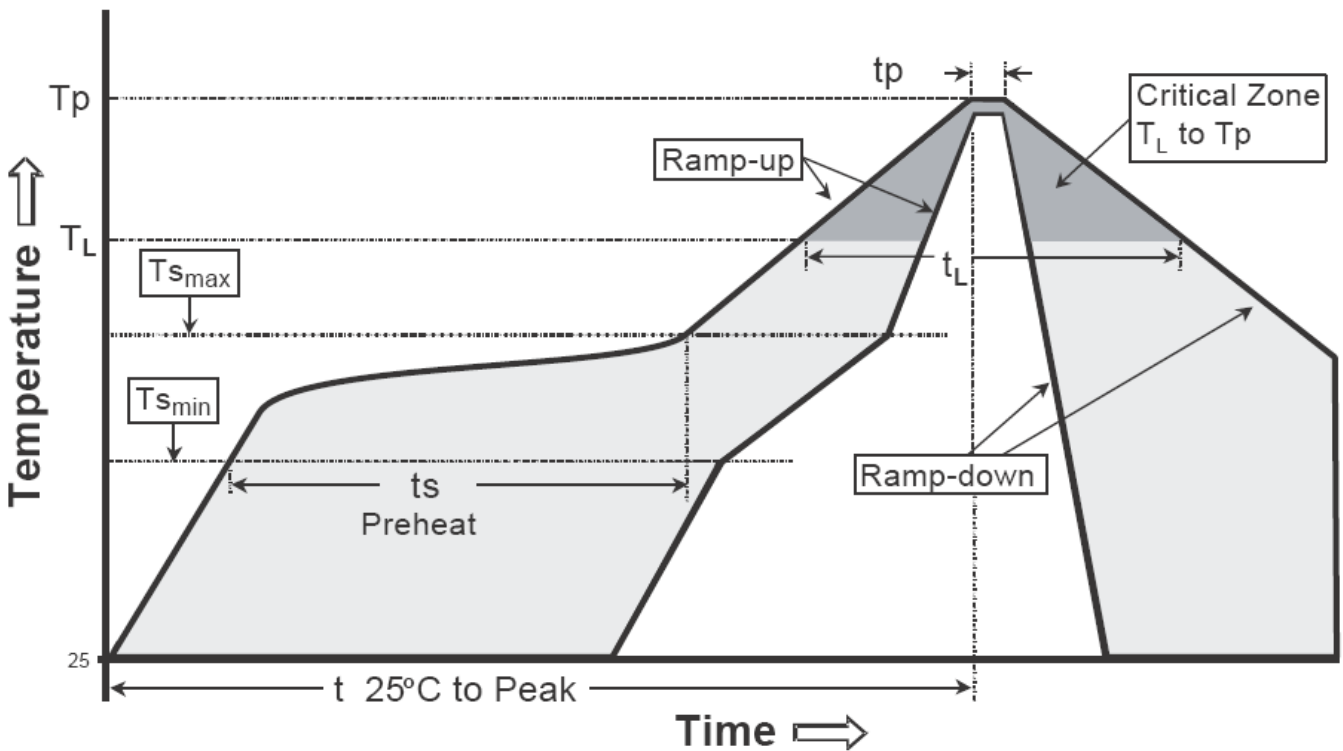
Carrier Tape Dimension



Recommended wave soldering condition

| | | |
|-----------------|------------------|-----------------|
| Product | Peak Temperature | Soldering Time |
| Pb-free devices | 260 +0/-5 °C | 5 +1/-1 seconds |

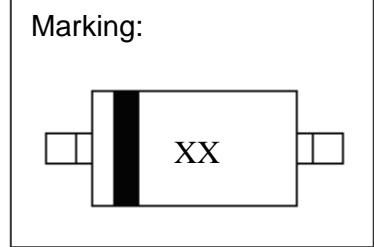
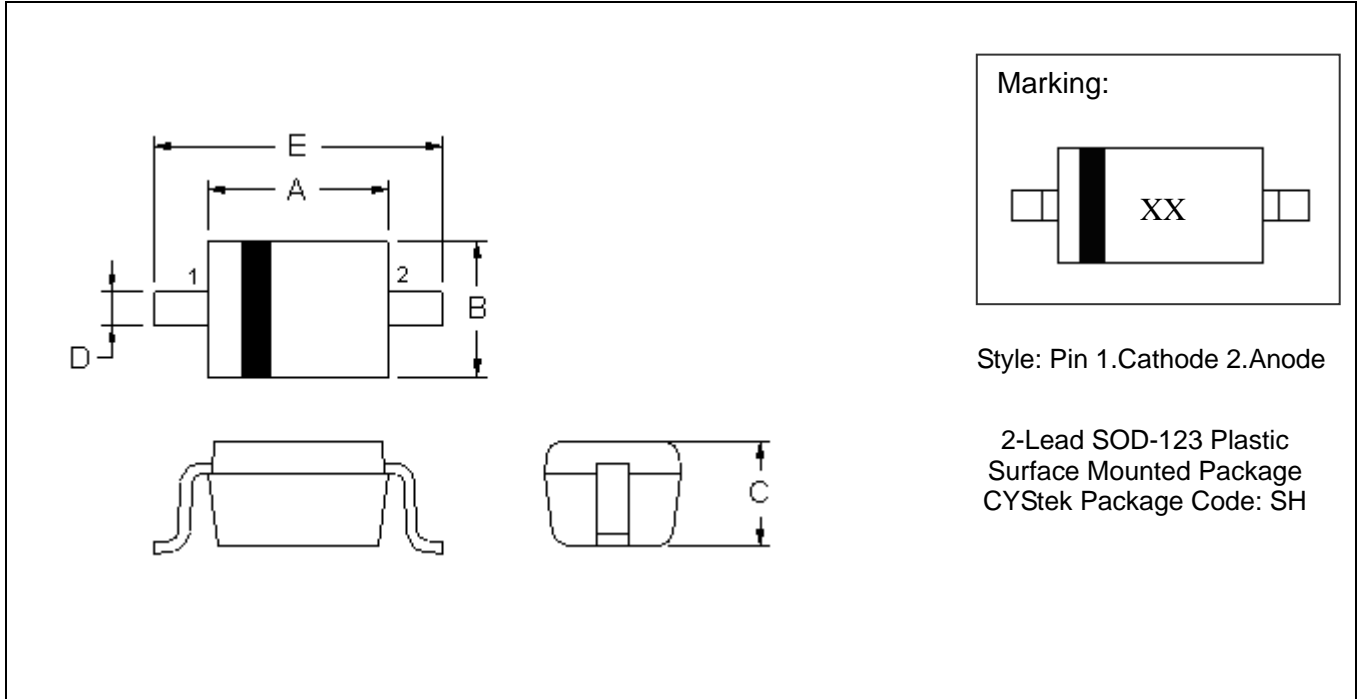
Recommended temperature profile for IR reflow



| Profile feature | Sn-Pb eutectic Assembly | Pb-free Assembly |
|---|-------------------------|------------------|
| Average ramp-up rate (T _{smax} to T _p) | 3°C/second max. | 3°C/second max. |
| Preheat | | |
| -Temperature Min(T _{s min}) | 100°C | 150°C |
| -Temperature Max(T _{s max}) | 150°C | 200°C |
| -Time(t _{s min} to t _{s max}) | 60-120 seconds | 60-180 seconds |
| Time maintained above: | | |
| -Temperature (T _L) | 183°C | 217°C |
| - Time (t _L) | 60-150 seconds | 60-150 seconds |
| Peak Temperature(T _p) | 240 +0/-5 °C | 260 +0/-5 °C |
| Time within 5°C of actual peak temperature(tp) | 10-30 seconds | 20-40 seconds |
| Ramp down rate | 6°C/second max. | 6°C/second max. |
| Time 25 °C to peak temperature | 6 minutes max. | 8 minutes max. |

Note : All temperatures refer to topside of the package, measured on the package body surface.

SOD-123 Dimension



Style: Pin 1.Cathode 2.Anode

2-Lead SOD-123 Plastic Surface Mounted Package
 CYStek Package Code: SH

*: Typical

| DIM | Inches | | Millimeters | | DIM | Inches | | Millimeters | |
|-----|--------|-------|-------------|-------|-----|--------|-------|-------------|-------|
| | Min. | Max. | Min. | Max. | | Min. | Max. | Min. | Max. |
| A | 0.102 | 0.110 | 2.600 | 2.800 | E | 0.140 | 0.152 | 3.550 | 3.850 |
| B | 0.059 | 0.067 | 1.500 | 1.700 | | | | | |
| C | 0.041 | 0.049 | 1.050 | 1.250 | | | | | |
| D | 0.018 | 0.026 | 0.450 | 0.650 | | | | | |

Notes: 1.Controlling dimension : millimeters.
 2.Lead thickness specified per L/F drawing with solder plating.
 3.If there is any question with packing specification or packing method, please contact your local CYStek sales office.

Material:

- Lead: Pure tin plated
- Mold Compound: Epoxy resin family, flammability solid burning class: UL94V-0

Important Notice:

- All rights are reserved. Reproduction in whole or in part is prohibited without the prior written approval of CYStek.
- CYStek reserves the right to make changes to its products without notice.
- CYStek **semiconductor products are not warranted to be suitable for use in Life-Support Applications, or systems.**
- CYStek assumes no liability for any consequence of customer product design, infringement of patents, or application assistance.